



# Kilworth Height

3 Bedroom | 2 Reception | House - Semi-Detached

Council Tax Band: C | Current EPC Rating: C

Proudly presented by



[www.highgatehomes.co.uk](http://www.highgatehomes.co.uk) | 01772 651165 | [sales@highgatehomes.co.uk](mailto:sales@highgatehomes.co.uk)

# 71 Kilworth Height, Fulwood, Preston, PR2 3NX

Asking price £190,000

Located in the sought-after area of Kilworth Heights in Fulwood, Preston, this three-bedroom semi-detached property offers fantastic potential for anyone looking to create a home tailored to their own taste.

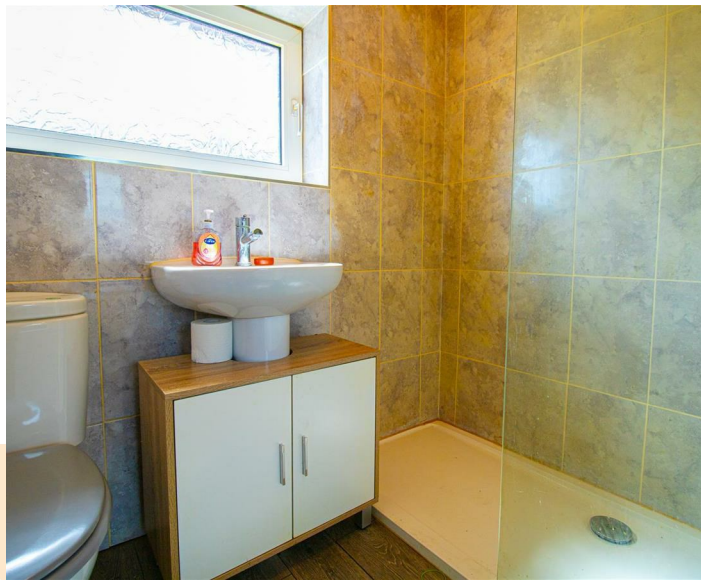
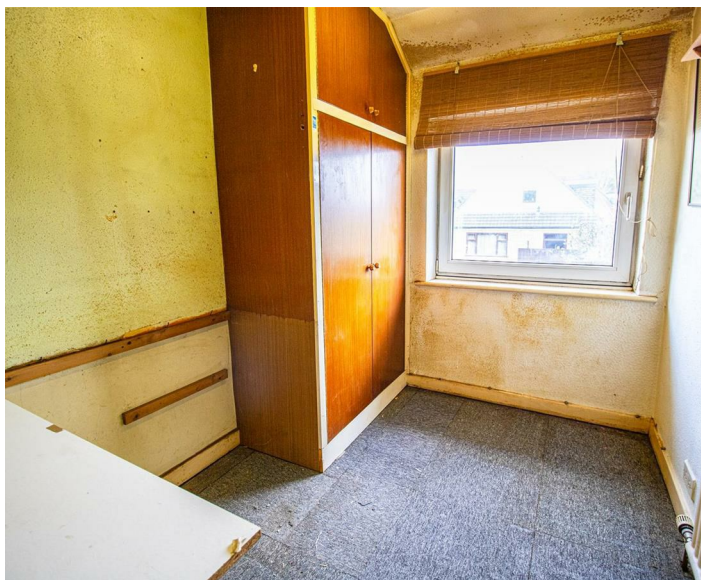
To the front of the property, you'll find a private driveway providing convenient parking, alongside a low-maintenance garden area. Upon entering through the main front door, you're welcomed into a vestibule, which leads into a central hallway with stairs to the first floor. Moving through, you can access the main reception room and the kitchen.

The kitchen is a good size and benefits from two access points to the rear garden, one via large French door and another through a convenient side door. The rear garden is mainly paved, making it easy to maintain, not overlooked from rear and also features a detached outbuilding that provides valuable additional storage space. Upstairs, the property offers three bedrooms and a family bathroom.

This is a perfect opportunity for first-time buyers, families, or investors looking to take on a rewarding renovation in a well-connected and desirable part of Preston. With generous living space, off-road parking, and excellent potential inside and out. Situated in a very popular location in Fulwood close to local amenities including schools, shops, bus routes, leisure centre and Royal Preston Hospital, this property is not to be missed.

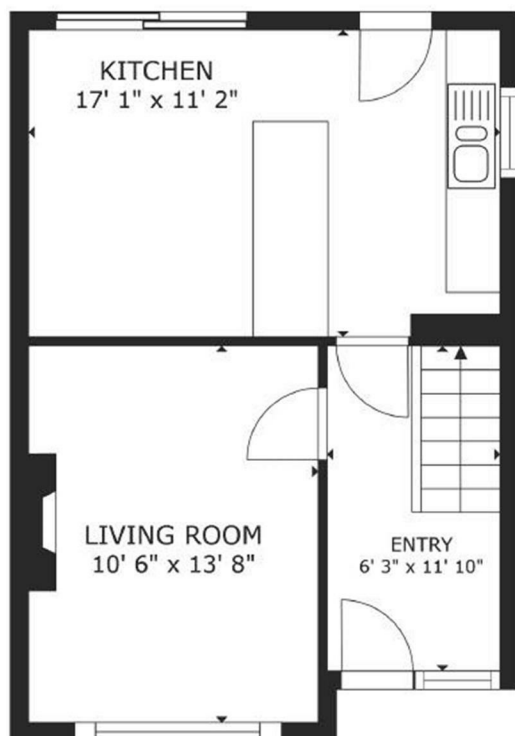
Contact us today to arrange your viewing and discover the potential that Kilworth Heights has to offer.



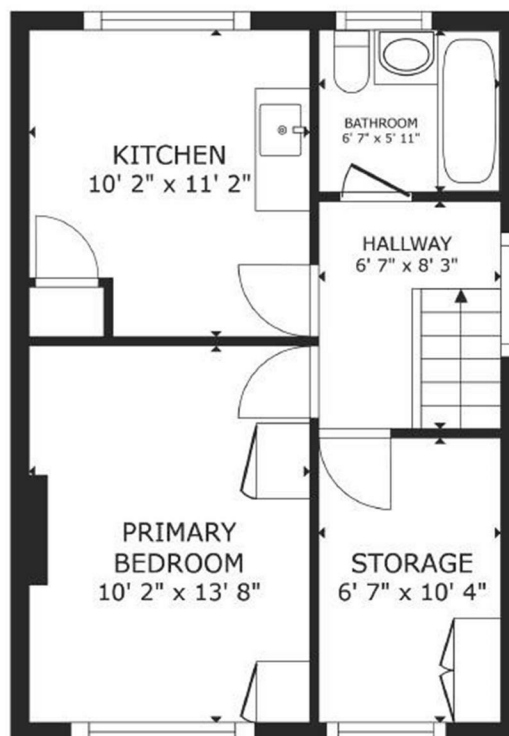


If you have any specific questions, please do not hesitate to get in touch  
on 01772 651165 or, [sales@highgatehomes.co.uk](mailto:sales@highgatehomes.co.uk)

[www.highgatehomes.co.uk](http://www.highgatehomes.co.uk) | 01772 651165 | [sales@highgatehomes.co.uk](mailto:sales@highgatehomes.co.uk)



FLOOR 1



FLOOR 2

GROSS INTERNAL AREA  
 FLOOR 1 418 sq.ft. FLOOR 2 430 sq.ft.  
 TOTAL : 848 sq.ft.  
 SIZES AND DIMENSIONS ARE APPROXIMATE, ACTUAL MAY VARY.